

INVITATION FOR BIDS

ADDENDUM # 1 Questions and Clarifications

Administration Building HVAC Renovation IFB #FED2019-02

TO: Prospective Bidders
FROM: Martha Howarter, Director of Federal Programs
DATE: February 15, 2019
SUBJECT: Addendum No. 1 – Questions and Clarifications

The following is included as part of Addendum No.1 and supersedes the language/requirements set forth in the original "Invitation for Bid".

ADDENDUM # 1 – Questions and Clarifications

#	Questions submitted or asked	Response from GPMTD
1	Is an estimate of cost available for the subject project?	<i>Project estimated cost, based on project manual and bid design issued, is expected to be under \$250,000.</i>
2	Is the existing roof under warranty?	<i>No.</i>
3	Is a fire damper required in the floor of the new chase?	<i>No, wall only.</i>
4	Are the existing ducts lined?	<i>Yes.</i>
5	Is there flex duct in the building?	<i>Yes, some at the end of the run outs to diffuser.</i>
6	Is everything a lay-in ceiling?	<i>No, some hard ceilings. Hard ceilings in restrooms and janitor closet. Anything in the Mechanical Rooms are exposed. Subsequent to the meeting, it was determined that the line-sets to the exterior of the building require work. Gypsum board ceilings will require modification. Refer to addendum.</i>
7	Is rooftop screening required?	<i>Subsequent to the pre-bid meeting, it was determined that roof screening is required. Refer to addendum.</i>
8	Can the contractor have a place to store materials	<i>Yes, south ¼ of main room in basement. Area is a 24 hour camera recording.</i>

#	Questions submitted or asked	Response from GPMTD
9	Will the Prime Contractor and/or their subcontractors required to complete all the required Attachments?	<i>The Prime Contractor is responsible for completing and/or executing all the Attachments. Subcontractors would provide necessary information related to the subcontractor to the Prime. If a DBE, Subcontractor would complete the related DBE Attachment.</i>
10	Is GPMTD anticipating a General being Prime or a HVAC?	<i>It is at the bidders discretion whether the Prime Contractor will be an HVAC Contractor or a General Contractor</i>
11	What about the chase?	<i>The new chases are fire rated.</i>
12	Fire Dampers on each Floor or just the Chase?	<i>The chase walls are fire rated. Therefore fire dampers are required at the walls, but not at the floor</i>
13	Is any of the duct work insulated?	<i>During the walkthrough, it was determined that ducts are have internally-lined insulation.</i>
14	Are the Air Conditioner Units 2.5 to 3 ton units?	<i>Refer to Construction Drawings.</i>
15	ERV is taking the purpose of the economizer?	<i>No. Due to the small size of the units, economizers are not required. The ERVs are for energy efficiency.</i>
16	Modification Section Next Pages	<i>Next Pages Prepared by Farnsworth Group, Inc. Addendum 01</i> <i>Modifications Section 2-2 Attachment R – Project Manual Attachment S – Drawing Set (Bid Set) 18 Drawings</i>

**Greater Peoria Mass Transit District (GPMTD/CityLink)
Administration Building HVAC Renovation**

Project Number: 0180459.03

Addendum 01

Addendum Issue Date: February 15, 2019

Project Issue Date: January 28, 2019

ADDENDUM 01

Containing: 6 pages
18 drawings
1 project manual section

This addendum amends the drawings and specifications of the above referenced project and is hereby incorporated into the contract documents as part thereof.

INVITATION FOR BIDS

SECTION 2 – SCOPE OF WORK

1. Paragraph 2-2: in the second sub-paragraph, replace the words “color openings” with “floor openings”.

ATTACHMENT R - PROJECT MANUAL

01 5000 – TEMPORARY FACILITIES AND CONTROLS

1. Paragraph 1.6: ADD the following to item A:
“i. Contractors may park in the spaces immediately north of the building and access the building through the northwest entrance.”

01 5000 – TEMPORARY FACILITIES AND CONTROLS

1. ADD Paragraph 1.9 as follows:
“1.0 CONTRACTOR INTERIOR STAGING
A. Contractor may use the south ¼ of the main room in the lower level for staging at their risk.”

07 5100 – BUILT-UP BITUMINOUS ROOFING

1. Paragraph 1.8: ADD the following:
“D. Existing roof is not under warranty.”

ATTACHMENT S – DRAWING SET (Bid Set)

Sheet AD1.1 – DEMOLITION PLANS

1. REVISION: Remove existing gypsum ceiling in MEN 0A08 to extent required for replacement of split-system linesets. Coordinate extent of ceiling removal and replacement with MC.

Sheet AD1.1 – PLAN VIEWS

1. REVISION: Repair/Replace gypsum ceiling where required to accommodate split system lineset removal and replacement. New ceiling finish shall match existing. Re-paint entirety of gypsum ceiling if necessary to provide cohesive appearance.

Sheet MD1.0 – BASEMENT MECHANICAL DEMOLITION PLAN

1. REVISION: Revise Basement Mechanical Demolition Plan per attached MD1.0.
2. REVISION: Added Keynotes 6 and 7.
3. REVISION: Modified extent of existing flue demolition.

Sheet MD1.1 – FIRST FLOOR MECHANICAL DEMOLITION PLAN

1. REVISION: Revise First Floor Mechanical Demolition Plan per attached MD1.1.
2. REVISION: Added Keynotes 6 and 7 and associated scope.

Sheet M1.0 – BASEMENT MECHANICAL PLAN

1. REVISION: Revise Basement Mechanical Demolition Plan per attached M1.0.
2. REVISION: Added Keynotes 6, 7, and 8.
3. REVISION: Modified extent of existing flue demolition.

Sheet M1.1 – FIRST FLOOR MECHANICAL PLAN

1. REVISION: Revise First Floor Mechanical Plan per attached M1.1.
2. REVISION: Revised Keynotes 9 and 10 and associated scope.
3. REVISION: Added Keynotes 11 and 12 and associated scope.

Sheet M1.2 – ROOF MECHANICAL PLAN

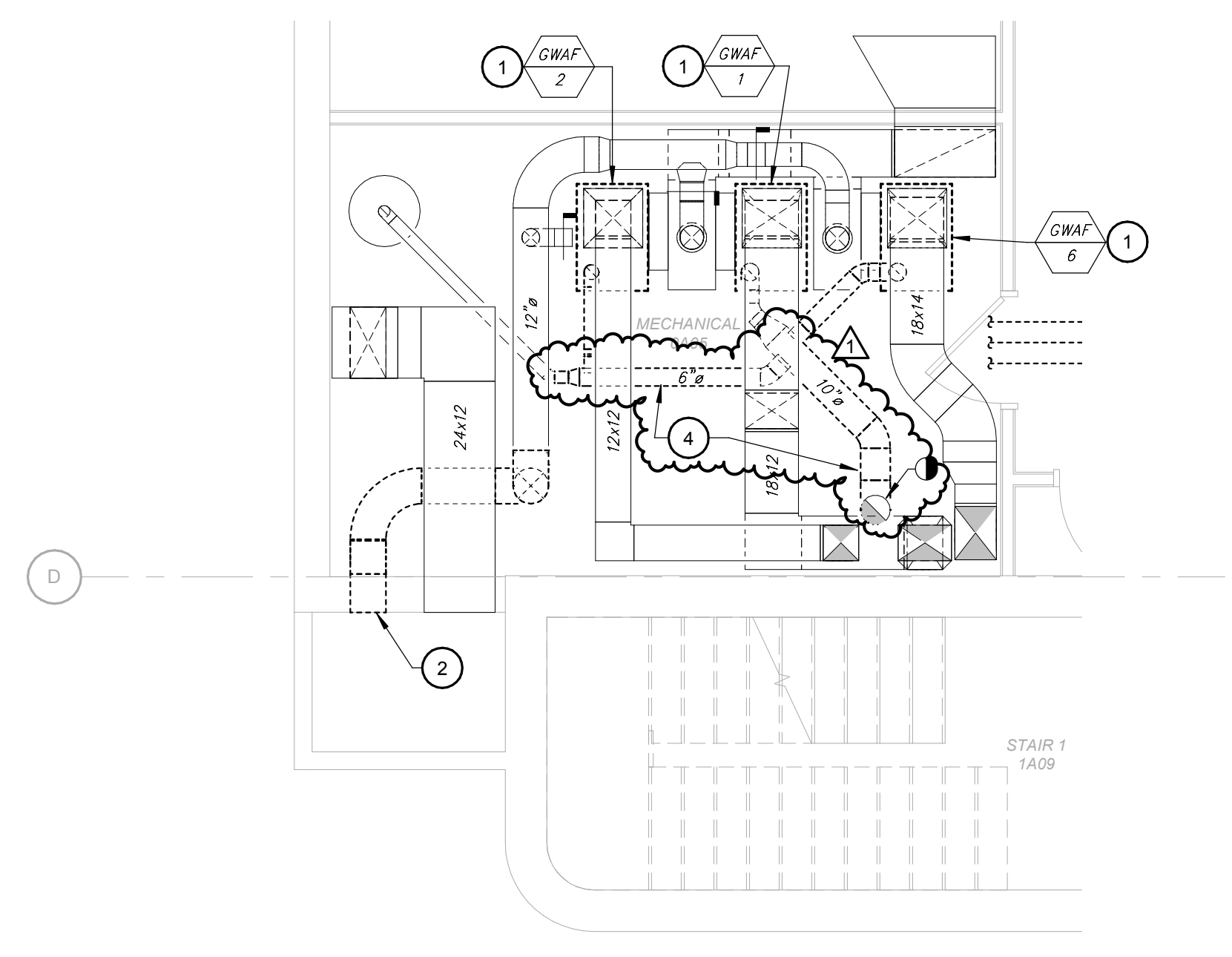
1. REVISION: Revise Roof Mechanical Plan per attached M1.2.
2. REVISION: Added Keynotes 1 and 2 and associated scope.

Sheet M6.1 – MECHANICAL SCHEDULES

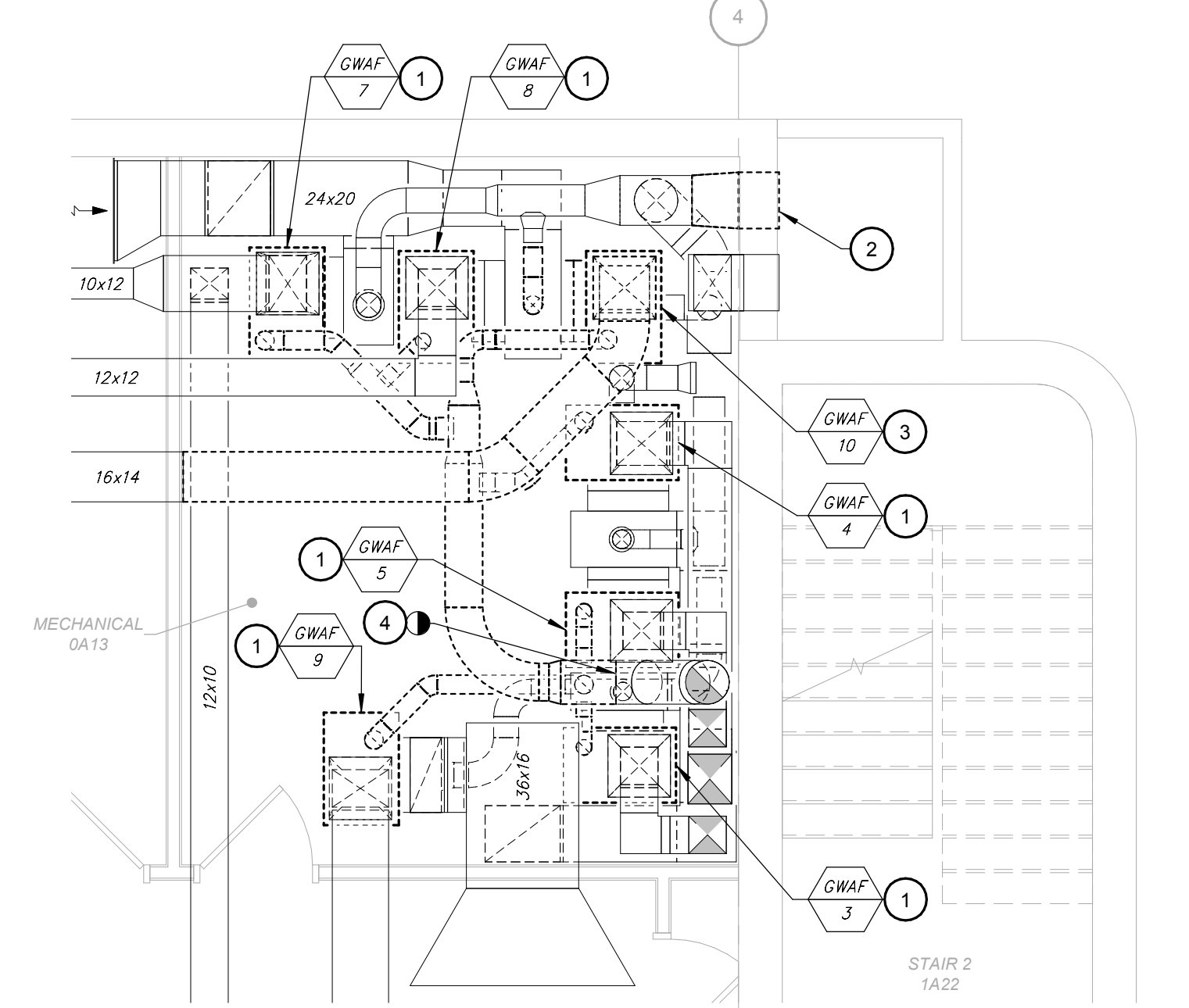
1. REVISION: Revise Energy Recovery Ventilator Schedule Notes 1 and 2 to require a standard 14" roof curb in lieu of the 18" curb.

ATTACHMENTS

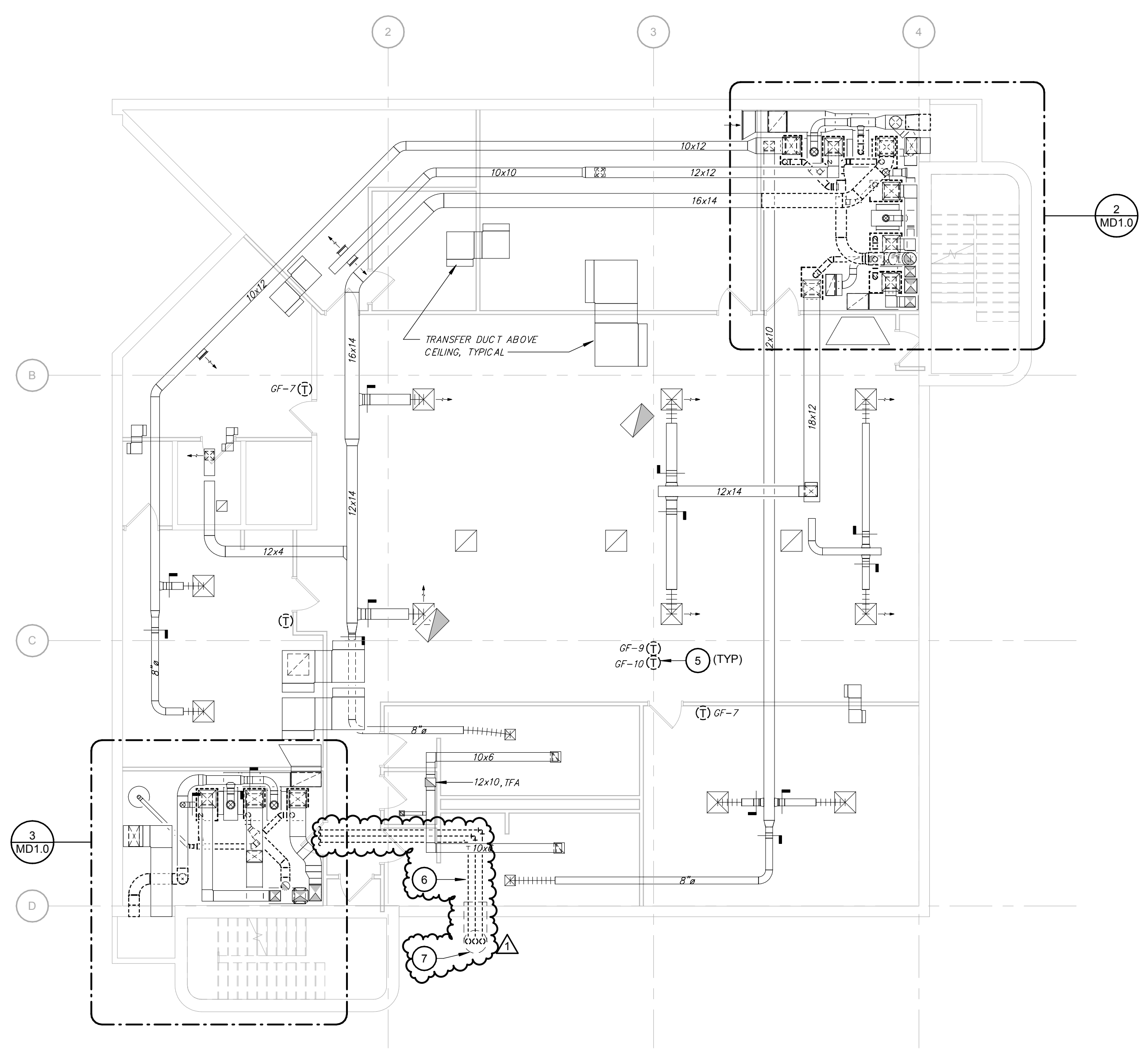
Sheets: MD1.0, MD1.1, M1.0, M1.1, M1.2, M6.1



3 ENLARGED MECHANICAL 0A05 DEMOLITION PLAN
Scale: 1/4" = 1'-0"



2 ENLARGED MECHANICAL 0A13 DEMOLITION PLAN
Scale: 1/4" = 1'-0"



1 BASEMENT MECHANICAL DEMOLITION PLAN
Scale: 1/8" = 1'-0"

GENERAL NOTES

A. PHASE REMOVAL AND REPLACEMENT OF FURNACE AND CONDENSING UNITS SHALL TO MINIMIZE AREAS OF THE BUILDING WITHOUT HEATING OR COOLING AT ANY GIVEN TIME. PROVIDE TEMPORARY HEAT WHERE NECESSARY WHILE SPACES SERVED BY NON-OPERATIONAL UNITS ARE DOWN. COORDINATE DOWN TIMES AND HEATING AND COOLING OUTAGES WITH OWNER.

KEYNOTES #

- 1 DISCONNECT GAS FURNACE FROM EXISTING SUPPLY, RETURN, AND COMBUSTION VENT DUCTS AND REMOVE FURNACE AND ASSOCIATED EVAPORATOR COIL. DISCONNECT FURNACES FROM GAS PIPING. REMOVE HUMIDIFIER AND ASSOCIATED DRAIN PIPING, WATER CONNECTIONS TO REMAIN FOR REUSE. REMOVE AND CAP HUMIDIFIER BYPASS DUCTS. MODIFY EXISTING SUPPLY DUCT OPENING FOR HUMIDIFIERS TO ACCEPT NEW HUMIDIFIERS.
- 2 REMOVE EXISTING OA MOTORIZED DAMPER AND LOUVER. PREP OPENING FOR ROUTING OF NEW FURNACE FLUES.
- 3 CUT AND CAP RA, OA, AND EXHAUST FLUE CONNECTIONS ASSOCIATED WITH EXISTING GF-9. REMOVE HUMIDIFIER WATER LINE BACK TO LAST ACTIVE SOURCE AND CAP.
- 4 REMOVE EXISTING FLUES AND CAP WEATHER TIGHT.
- 5 REMOVE THERMOSTAT AND ASSOCIATED HUMIDISTAT. PATCH WALL WHERE NEW THERMOSTAT WILL NOT COVER ANY SURFACES THAT DO NOT MATCH ADJACENT FINISHES.
- 6 REMOVE RLRS TO CONDENSING UNITS ON GRADE. COORDINATE RESTROOM GYPSUM CEILING REMOVAL AND REPAIR FOR ACCESS TO LINESETS.
- 7 PIPE TUNNEL TO GRADE ABOVE.



Farnsworth GROUP

100 WALNUT STREET, SUITE 200
PEORIA, ILLINOIS 61602
(309) 689-9888 / info@f-w.com

www.f-w.com
Engineers | Architects | Surveyors | Scientists

ISSUE #	DATE	DESCRIPTION
1	02/15/2019	ADDENDUM 01

BID SET
01/23/2019

PROJECT:
GREATER PEORIA MASS
TRANSIT DISTRICT

**ADMINISTRATION
BUILDING HVAC
RENOVATION**

2105 NE JEFFERSON AVENUE
PEORIA, ILLINOIS 61603

DATE:	01/23/2019
DESIGNED:	WH/DRR
DRAWN:	WH/DRR
REVIEWED:	DRR

SHEET TITLE:
**BASEMENT
MECHANICAL
DEMOLITION PLAN**

SHEET NUMBER:

MD1.0

PROJECT NO.: 0180459.03

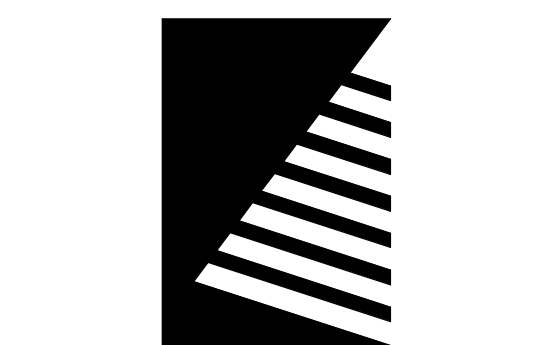
2/16/2019 12:24:16 PM

GENERAL NOTES

A. PHASE REPLACEMENT OF FURNACE AND CONDENSING UNITS SHALL TO MINIMIZE AREAS OF THE BUILDING WITHOUT HEATING OR COOLING AT ANY GIVEN TIME. PROVIDE TEMPORARY HEAT WHERE NECESSARY WHILE SPACES SERVED BY NON-OPERATIONAL UNITS ARE DOWN. COORDINATE DOWN TIMES AND HEATING AND COOLING OUTAGES WITH OWNER.

KEYNOTES #

- 1 REMOVE CONDENSING UNIT AND ASSOCIATED PIPING, PIPE SUPPORTS, AND CONTROLS.
- 2 REMOVE CONDENSING UNIT AND ASSOCIATED PIPING, PIPE SUPPORTS, AND CONTROLS. R/RS PIPING TUNNEL BELOW GRADE TO REMAIN. REPAIR ANY DISTURBANCES TO LANDSCAPING DUE TO PIPING WORK.
- 3 REMOVE THERMOSTAT AND ASSOCIATED HUMIDISTAT. PATCH WALL WHERE NEW THERMOSTAT WILL NOT COVER ANY SURFACES THAT DO NOT MATCH ADJACENT FINISHES.
- 4 REMOVE THERMOSTAT AND ASSOCIATED HUMIDISTAT AND REMOTE TEMPERATURE SENSOR. PATCH WALL WHERE NEW THERMOSTAT WILL NOT COVER ANY SURFACES THAT DO NOT MATCH ADJACENT FINISHES.
- 5 DISCONNECT EXISTING FLEX DUCT AND REMOVE DIFFUSER.
- 6 PIPE TUNNEL DOWN TO BELOW GRADE. SEE MD1.0 FOR CONTINUATION.
- 7 RELOCATE FIRE PROTECTION SPRINKLER HEAD TO ACCOMMODATE MODIFIED DUCT CHASE. SEE NEW WORK SHEETS FOR EXTENT OF NEW CHASE.



Farnsworth GROUP

100 WALNUT STREET, SUITE 200
PEORIA, ILLINOIS 61602
(309) 689-9888 / info@f-w.com

www.f-w.com
Engineers | Architects | Surveyors | Scientists

ISSUE #	DATE	DESCRIPTION
1	02/15/2019	ADDENDUM 01

BID SET
01/23/2019

PROJECT:
GREATER PEORIA MASS
TRANSIT DISTRICT

**ADMINISTRATION
BUILDING HVAC
RENOVATION**

2105 NE JEFFERSON AVENUE
PEORIA, ILLINOIS 61603

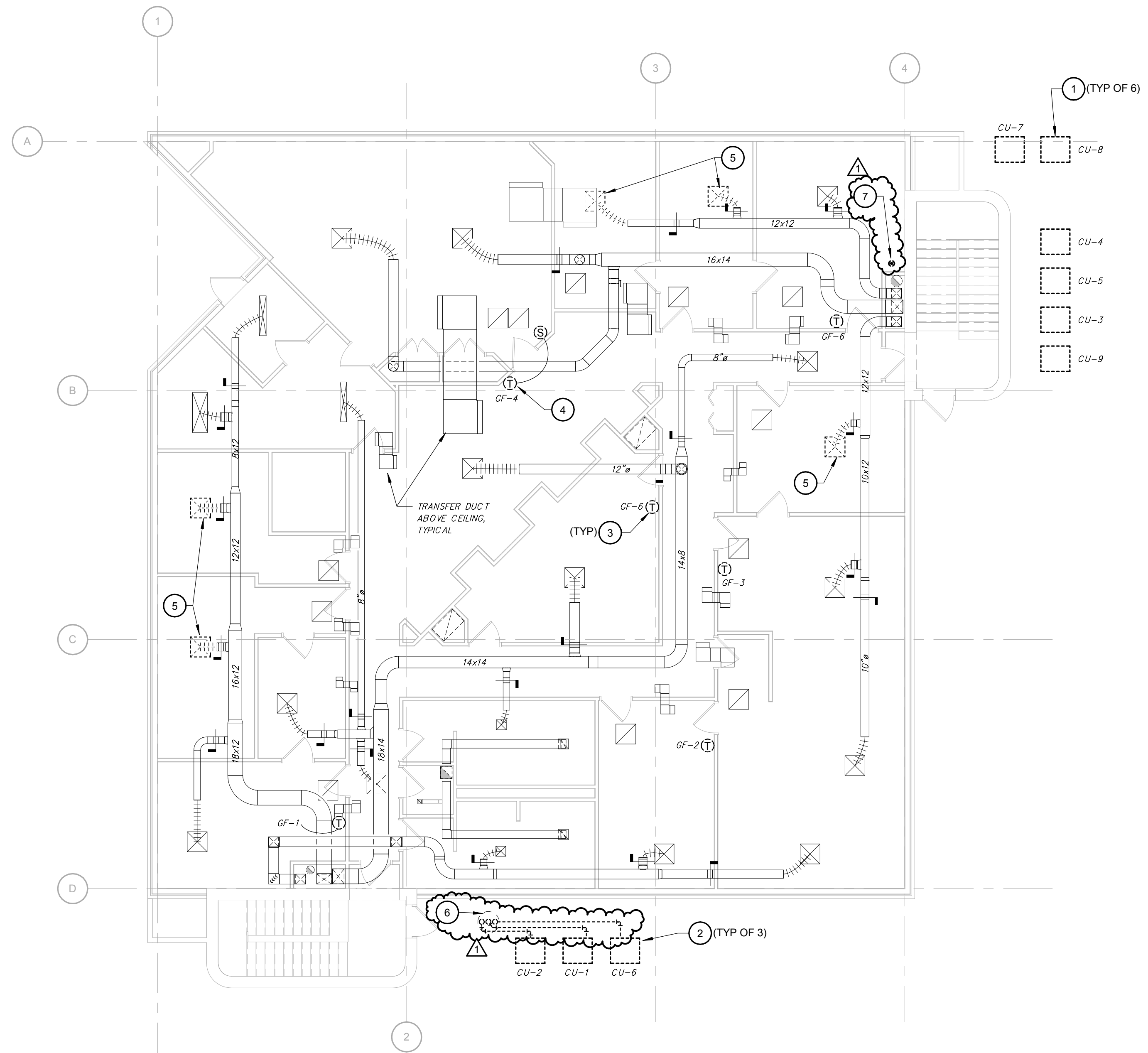
DATE:	01/23/2019
DESIGNED:	WH/DRR
DRAWN:	WH/DRR
REVIEWED:	DRR

SHEET TITLE:
**FIRST FLOOR
MECHANICAL
DEMOLITION PLAN**

SHEET NUMBER:

MD1.1

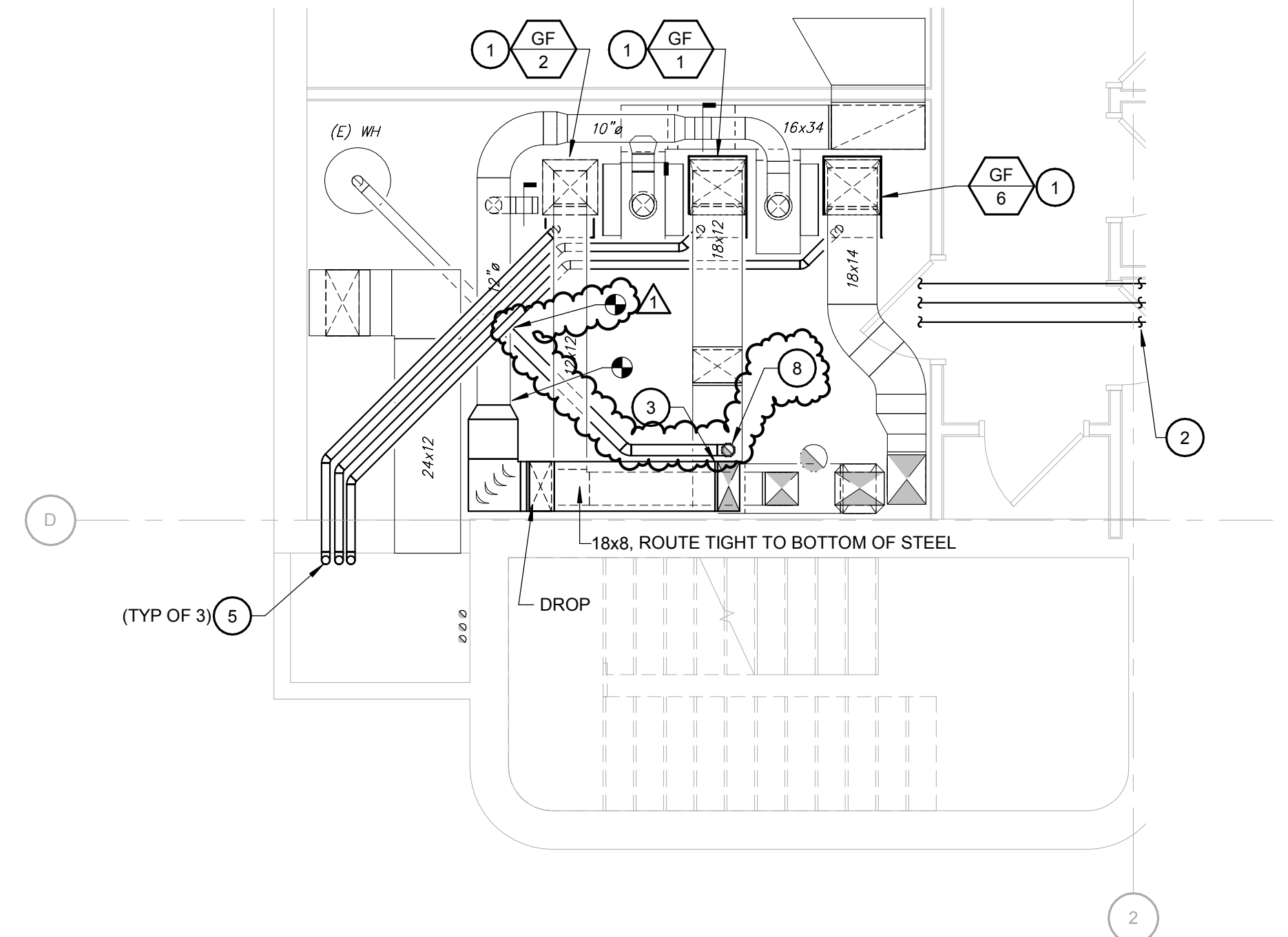
PROJECT NO.: 0180459.03



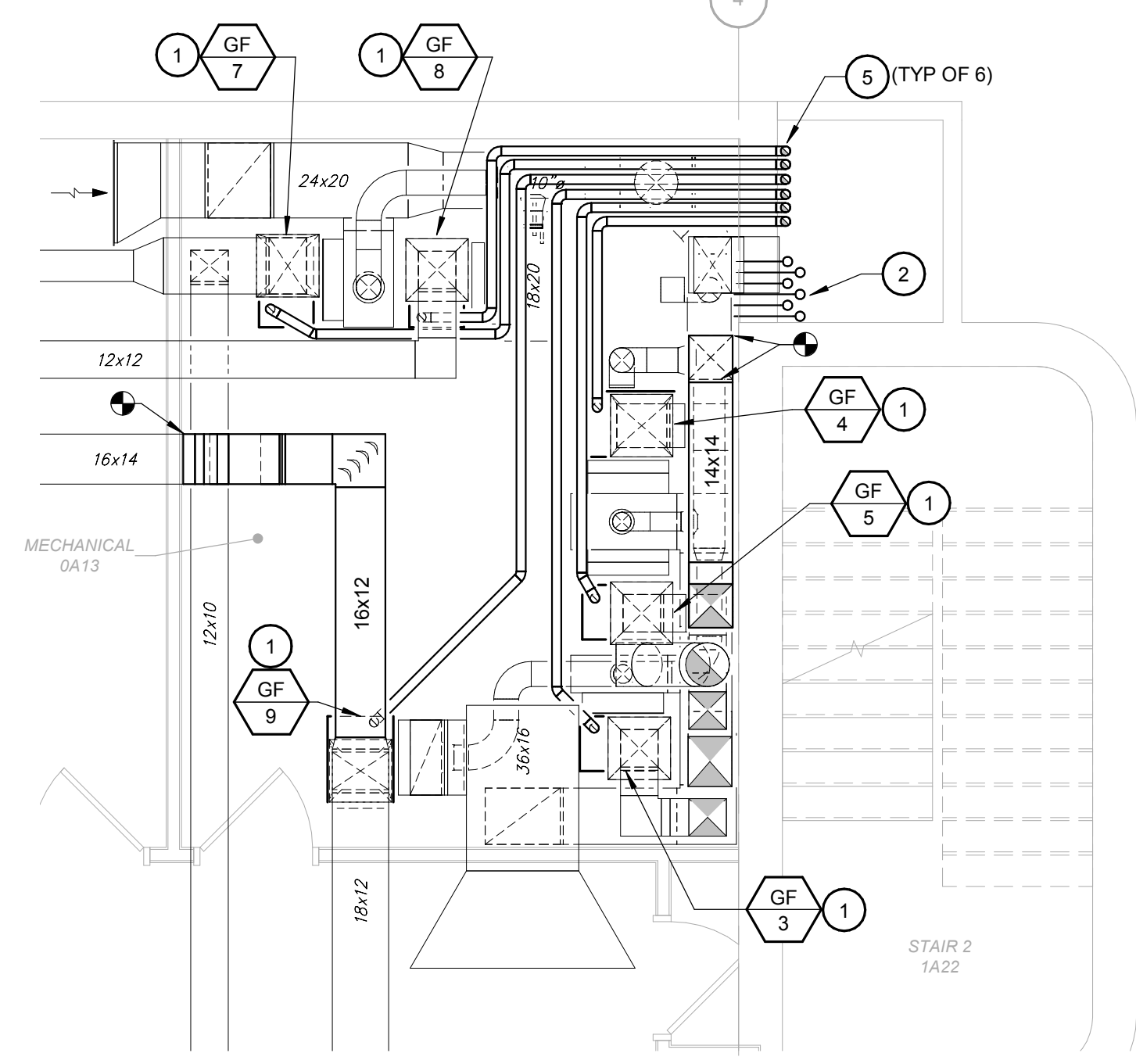
1 FIRST FLOOR MECHANICAL DEMOLITION PLAN
Scale: 1/8" = 1'-0"



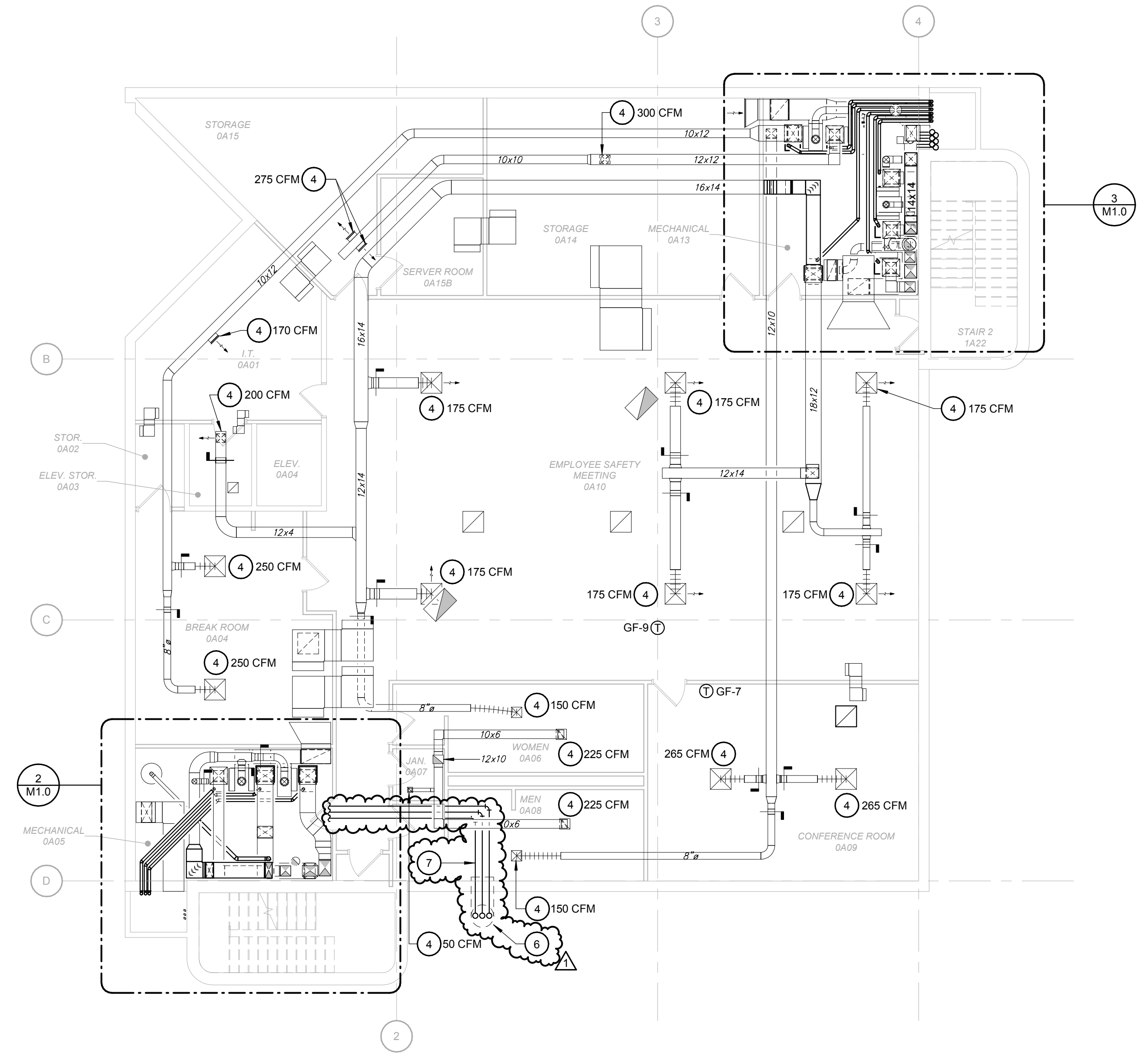
2/16/2019 12:24:17 PM



2 ENLARGED MECHANICAL 0A05 MECHANICAL PLAN
Scale: 1/4" = 1'-0"



3 ENLARGED MECHANICAL 0A13 MECHANICAL PLAN
Scale: 1/4" = 1'-0"



1 BASEMENT MECHANICAL PLAN
Scale: 1/8" = 1'-0"

GENERAL NOTES

A. PHASE REPLACEMENT OF FURNACE AND CONDENSING UNITS SHALL TO MINIMIZE AREAS OF THE BUILDING WITHOUT HEATING OR COOLING AT ANY GIVEN TIME. PROVIDE TEMPORARY HEAT WHERE NECESSARY WHILE SPACES SERVED BY NON-OPERATIONAL UNITS ARE DOWN. COORDINATE DOWN TIMES AND HEATING AND COOLING OUTAGES WITH OWNER.

KEYNOTES #

- 1 INSTALL GF ON EXISTING CONCRETE EQUIPMENT BASE. EXTEND OR MODIFY EXISTING EQUIPMENT BASE AND RETURN DUCT CONNECTIONS AS NECESSARY. PROVIDE VIBRATION DAMPENING PAD UNDER EACH CORNER OF THE FURNACE. ROUTE 3/4" CONDENSATE LINES FROM CONDENSATE DRAIN CONNECTIONS TO NEAREST FLOOR DRAIN. CONNECT HUMIDIFIER WATER SUPPLY LINES TO EXISTING CONNECTIONS AND ROUTE DRAIN PIPING TO NEAREST FLOOR DRAIN.
- 2 RLRS FROM FURNACES TO ASSOCIATED CONDENSING UNITS ON GRADE. SEE M1.1 FOR CONTINUATION.
- 3 18x8 ERV S/F FROM ABOVE
- 4 BALANCE AIR DEVICE TO CFM INDICATED.
- 5 FURNACE FLUES, ROUTE THROUGH EXISTING LOUVER WALL OPENING AND RACK ON WALL. ROUTE TO ABOVE GRADE AND TERMINATE MINIMUM 3'-0" ABOVE GRADE. PAINT FLUES TO MATCH ADJACENT SURFACES.
- 6 PIPING TUNNEL FROM ABOVE CEILING TO GRADE ABOVE. TUNNEL TO REMAIN FOR RE-USE.
- 7 RLRS ABOVE RESTROOM CEILING. FOLLOW ROUTE OF EXISTING LINESETS. COORDINATE CEILING PATCHING AREAS.
- 8 NEW 5"Ø WATER HEATER FLUE UP TO ROOF. TERMINATE AT ROOF WITH ROOF CAP.



Farnsworth GROUP

100 WALNUT STREET, SUITE 200
PEORIA, ILLINOIS 61602
(309) 689-9888 / info@f-w.com

www.f-w.com
Engineers | Architects | Surveyors | Scientists

ISSUE # DATE DESCRIPTION
1 02/15/2019 ADDENDUM 01

BID SET
01/23/2019

PROJECT:
GREATER PEORIA MASS
TRANSIT DISTRICT

**ADMINISTRATION
BUILDING HVAC
RENOVATION**

2105 NE JEFFERSON AVENUE
PEORIA, ILLINOIS 61603

DATE: 01/23/2019
DESIGNED: WH/DRR
DRAWN: WH/DRR
REVIEWED: DRR

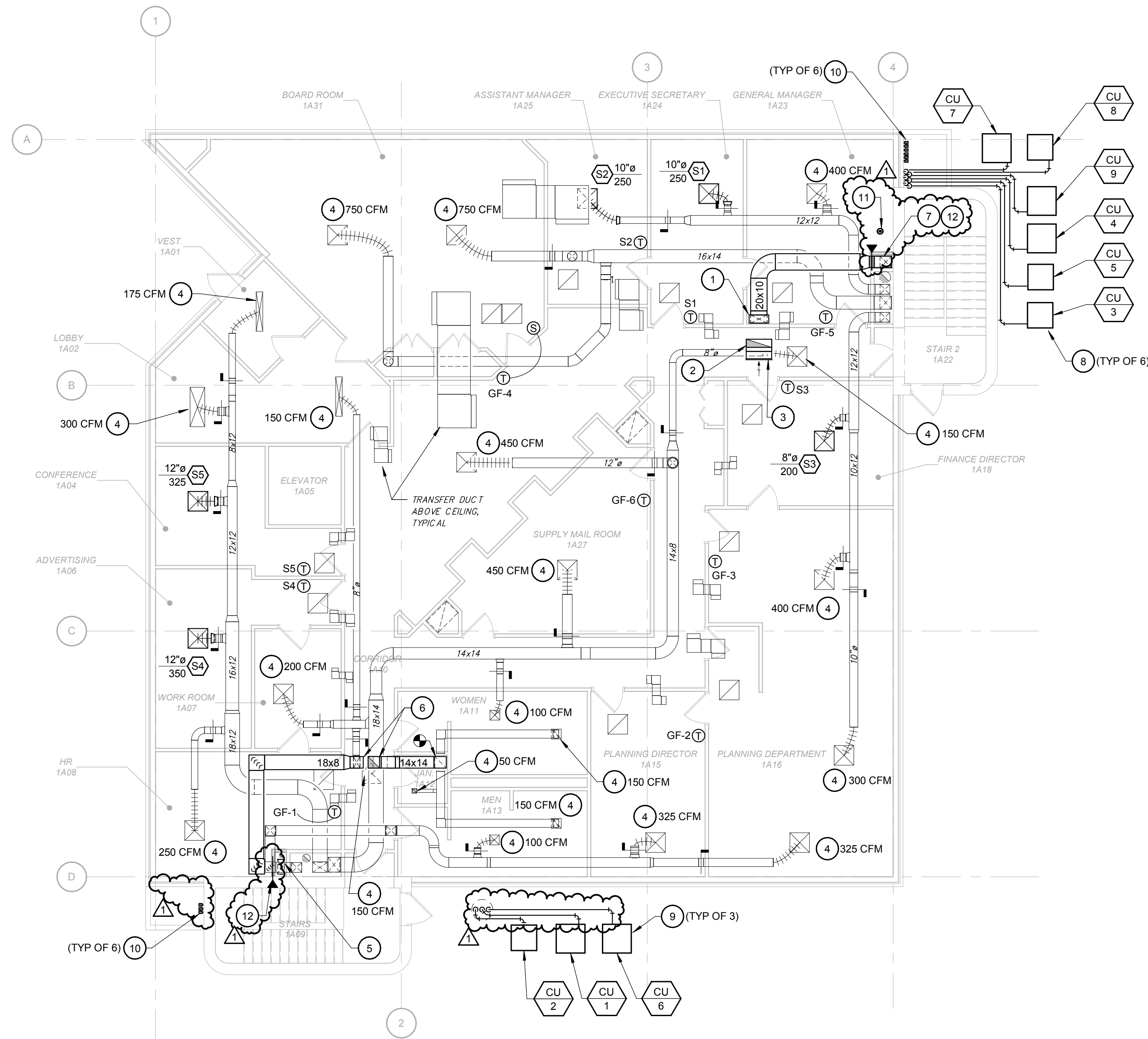
SHEET TITLE:
**BASEMENT
MECHANICAL PLAN**

SHEET NUMBER:

M1.0

PROJECT NO.: 0180459.03

2/16/2019 12:24:14 PM

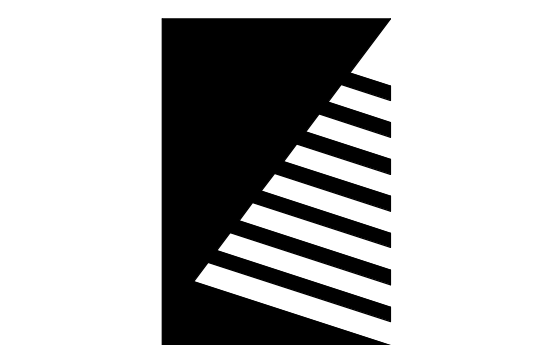


GENERAL NOTES

A. PHASE REPLACEMENT OF FURNACE AND CONDENSING UNITS SHALL TO MINIMIZE AREAS OF THE BUILDING WITHOUT HEATING OR COOLING AT ANY GIVEN TIME. PROVIDE TEMPORARY HEAT WHERE NECESSARY WHILE SPACES SERVED BY NON-OPERATIONAL UNITS ARE DOWN. COORDINATE DOWN TIMES AND HEATING AND COOLING OUTAGES WITH OWNER.

KEYNOTES #

- 1 24x10 SA FROM ABOVE.
- 2 31x10 EA UP.
- 3 31x10 EA, OPEN TO PLENUM. COVER OPEN DUCT END WITH 1/2" STEEL WIRE MESH.
- 4 BALANCE AIR DEVICE TO CFM INDICATED.
- 5 18x8 DOWN TO FLOOR BELOW.
- 6 14x16 EA UP AND 14x16 SA FROM ABOVE
- 7 14x14 SA DN THROUGH EXPANDED CHASE.
- 8 PLACE CU ON EXISTING CONCRETE PAD. ROUTE RL/RS INTO BUILDING ALONG SAME PATH AS EXISTING LINES. SECURE PIPING WITH PIPE SUPPORTS.
- 9 PLACE CU ON EXISTING CONCRETE PAD. ROUTE RL/RS INTO BUILDING IN PIPE TUNNEL UNDER GROUND SIMILAR TO EXISTING. SEAL OUTSIDE END OF PIPE TUNNEL WEATHER TIGHT. PROVIDE NEW PIPE SUPPORTS FOR PIPING AND REPAIR ANY DISTURBED LANDSCAPING BACK TO PRE-EXISTING CONDITION.
- 10 FURNACE FLUES FROM BELOW, TERMINATE MIN. 3'-0" ABOVE GRADE. PROVIDE MINIMUM 48"HX36"W STAINLESS STEEL PLATE ON EXTERIOR WALL BEHIND FLUES.
- 11 RELOCATED SPRINKLER HEAD, CENTER IN CEILING TILE.
- 12 FIRE DAMPER IN PENETRATION TO CHASE WALL.



Farnsworth GROUP

100 WALNUT STREET, SUITE 200
PEORIA, ILLINOIS 61602
(309) 689-9888 / info@f-w.com

www.f-w.com
Engineers | Architects | Surveyors | Scientists

#	DATE:	DESCRIPTION:
1	02/15/2019	ADDENDUM 01

BID SET
01/23/2019

PROJECT:
GREATER PEORIA MASS
TRANSIT DISTRICT

**ADMINISTRATION
BUILDING HVAC
RENOVATION**

2105 NE JEFFERSON AVENUE
PEORIA, ILLINOIS 61603

DATE:	01/23/2019
DESIGNED:	WH/DRR
DRAWN:	WH/DRR
REVIEWED:	DRR

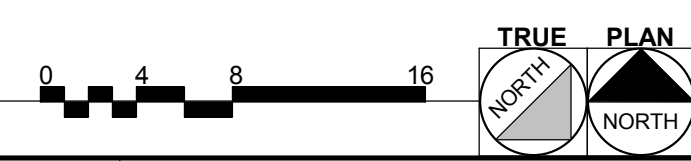
SHEET TITLE:
**FIRST FLOOR
MECHANICAL PLAN**

SHEET NUMBER:

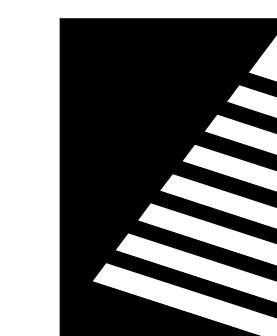
M1.1

PROJECT NO.: 0180459.03

1 FIRST FLOOR MECHANICAL PLAN
Scale: 1/8" = 1'-0"



2/16/2019 12:24:14 PM



Farnsworth GROUP

100 WALNUT STREET, SUITE 200
PEORIA, ILLINOIS 61602
(309) 689-9888 / info@f-w.com

www.f-w.com
Engineers | Architects | Surveyors | Scientists

ISSUE #	DATE	DESCRIPTION
1	02/15/2019	ADDENDUM 01

KEYNOTES

- PROVIDE EQUIPMENT CURB MOUNTED ROOF SCREEN OF SUFFICIENT HEIGHT TO SCREEN ERV. BASIS OF DESIGN SCREEN IS CITYSCAPE ENVISOR WITH ACRYLIC CAP VERTICAL LOUVER PANELS, BAND TRIM, AND COLOR AS SELECTED BY ARCHITECT.
- 5"Ø FLUE THROUGH ROOF. TERMINATE WITH RAIN CAP.

BID SET
01/23/2019

PROJECT:
GREATER PEORIA MASS
TRANSIT DISTRICT

ADMINISTRATION BUILDING HVAC RENOVATION

2105 NE JEFFERSON AVENUE
PEORIA, ILLINOIS 61603

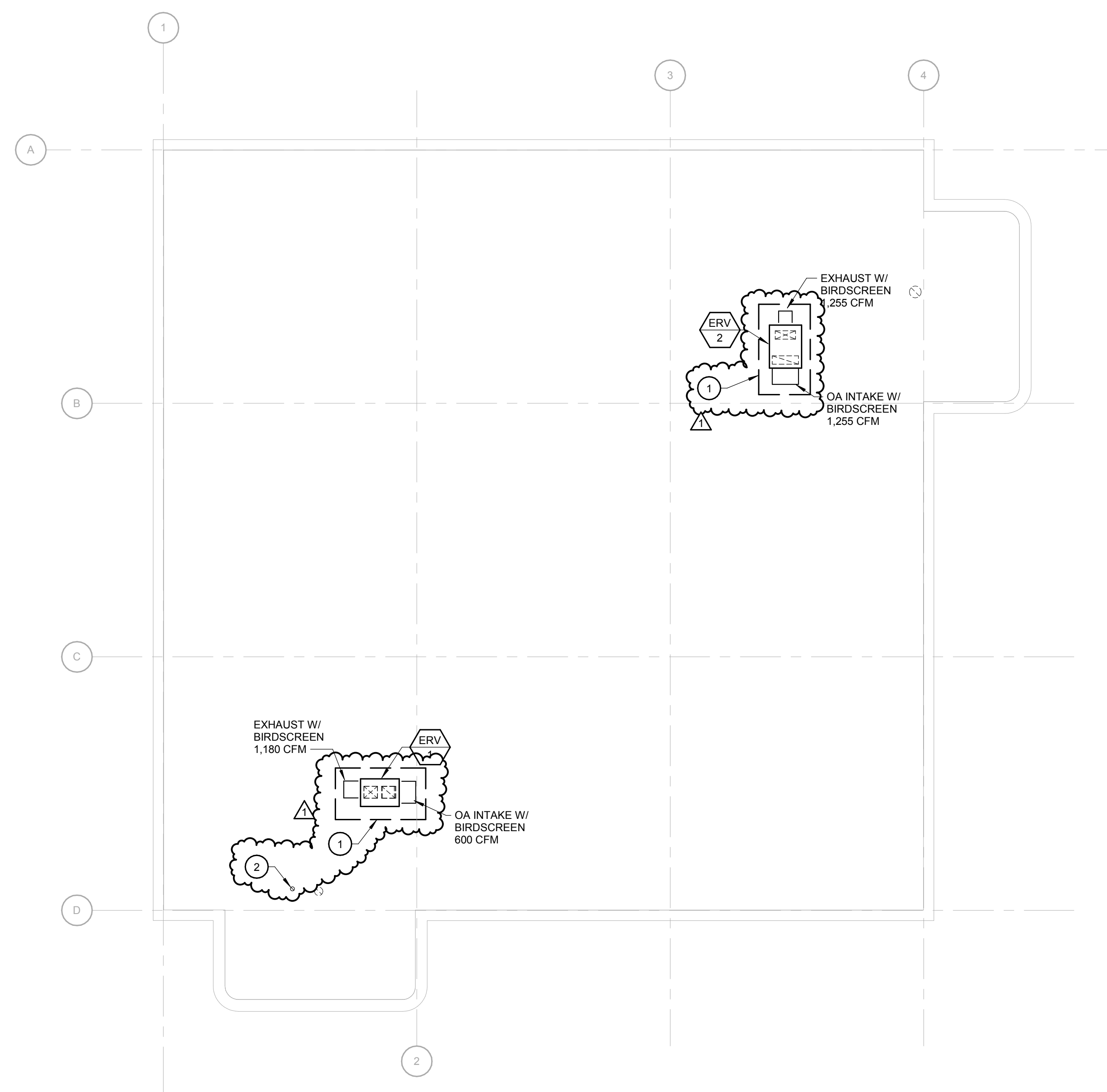
DATE: 01/23/2019
 DESIGNED: WH/DRR
 DRAWN: WH/DRR
 REVIEWED: DRR

ROOF MECHANICAL PLAN

SHEET NUMBER:

M1.2

PROJECT NO.: 0180459.03



1 ROOF MECHANICAL PLAN

Scale: 1/8" = 1'-0"



2/16/2019 12:24:15 PM

GAS FURNACE SCHEDULE

PLAN MARK	MANUFACTURER	MODEL	LOCATION	SERVICE	COND. UNIT MARK	SUPPLY FAN				HEATING SECTION			COOLING COIL SECTION		COND. DRAIN SIZE	FILTER		ELECTRICAL DATA				PHYSICAL DATA				REMARKS			
						CFM	CFM OA	ESP (IN. W.C.)	DRIVE	HP	FUEL	INPUT (MBH)	OUTPUT (MBH)	TYPE		TOTAL CAP. (MBH)	TYPE	MERV	THICK. (IN.)	MAX. FACE VEL. (FPM)	V/PH	FLA	MCA	MOCP	L (IN.)		W (IN.)	H (IN.)	WT. (LB.)
GF 1	CARRIER	59TP6A100	MECHANICAL OA05	1A01, 1A02, 1A04, 1A06, 1A08	CU-1	1400	210	0.6	DIRECT	1	NATURAL GAS	100	97	DIRECT EXPANSION	48	.75	HIGH EFF.	8	2	650	115/1	15.6	11.8	20	29.5	21	35	166	1,2,3
GF 2	CARRIER	59TP6A060	MECHANICAL OA05	1A13, 1A15, 1A16	CU-2	750	170	0.6	DIRECT	0.75	NATURAL GAS	60	58	DIRECT EXPANSION	24	.75	HIGH EFF.	8	2	650	115/1	12.4	9.2	15	29.5	17.5	35	142	1,2,3
GF 3	CARRIER	59TP6A060	MECHANICAL OA13	1A16, 1A18	CU-3	900	135	0.6	DIRECT	0.75	NATURAL GAS	60	58	DIRECT EXPANSION	30	.75	HIGH EFF.	8	2	650	115/1	12.4	9.2	15	29.5	17.5	35	142	1,2,3
GF 4	CARRIER	59TP6A100	MECHANICAL OA13	1A31	CU-4	1500	225	0.6	DIRECT	1	NATURAL GAS	100	97	DIRECT EXPANSION	60	.75	HIGH EFF.	8	2	650	115/1	15.6	11.8	20	29.5	21	35	166	1,2,3
GF 5	CARRIER	59TP6A060	MECHANICAL OA13	1A23, 1A24, 1A25	CU-5	900	135	0.6	DIRECT	0.75	NATURAL GAS	60	58	DIRECT EXPANSION	30	.75	HIGH EFF.	8	2	650	115/1	12.4	9.2	15	29.5	17.5	35	142	1,2,3
GF 6	CARRIER	59TP6A100	MECHANICAL OA05	1A02, 1A07, 1A10, 1A11, 1A27	CU-6	1650	350	0.6	DIRECT	1	NATURAL GAS	100	97	DIRECT EXPANSION	60	.75	HIGH EFF.	8	2	650	115/1	15.6	11.8	20	29.5	21	35	166	1,2,3
GF 7	CARRIER	59TP6A060	MECHANICAL OA13	0A04, 0A08, 0A09	CU-7	1350	210	0.6	DIRECT	0.75	NATURAL GAS	60	58	DIRECT EXPANSION	42	.75	HIGH EFF.	8	2	650	115/1	12.4	9.2	15	29.5	17.5	35	142	1,2,3
GF 8	CARRIER	59TP6A060	MECHANICAL OA13	0A14, 0A15B	CU-8	850	130	0.6	DIRECT	0.75	NATURAL GAS	60	58	DIRECT EXPANSION	48	.75	HIGH EFF.	8	2	650	115/1	12.4	9.2	15	29.5	17.5	35	142	1,2,3
GF 9	CARRIER	59TP6A100	MECHANICAL OA13	0A03, 0A10, 0A06	CU-9	1400	420	0.6	DIRECT	1	NATURAL GAS	100	97	DIRECT EXPANSION	48	.75	HIGH EFF.	8	2	650	115/1	15.6	11.8	20	29.5	21	35	166	1,2,3

NOTES: 1. GAS FURNACE, PROVIDE COMPLETE WITH SEVEN DAY PROGRAMMABLE THERMOSTAT AND HUMIDISTAT, AND CONDENSATE DRAIN WITH NEUTRALIZING KIT PIPED TO FLOOR DRAIN.
 2. CONNECT TO EXISTING SUPPLY AIR, RETURN AIR, OUTSIDE AIR INTAKE, VIF.
 3. 120V FAN-POWERED HUMIDIFIER WITH EXPANDED ALUMINUM EVAPORATOR PAD, CORD AND PLUG POWER CONNECTION, ROUTE DRAIN PIPING FROM DRAIN CONNECTION TO NEAREST FLOOR DRAIN. LOCATE HUMIDIFIER IN SUPPLY DUCT OF ASSOCIATED FURNACE, REUSE EXISTING DUCT OPENINGS WHERE POSSIBLE.

CONDENSING UNIT SCHEDULE

PLAN MARK	MANUFACTURER	MODEL	SERVICE	AMBIENT TEMP. (°F)	REFRIG. TYPE	NOM. CAP. (TONS)	STEPS	SEER	COMPRESSOR		FAN		ELECTRICAL DATA			PHYSICAL DATA				REMARKS
									QTY.	RLA EACH	QTY.	FLA EACH	V/PH	MCA	MOCP	L (IN.)	W (IN.)	H (IN.)	WT. (LB.)	
CU 1	CARRIER	24ACB748	VARIOUS	95	R-410A	48000	2	17	1	21.2	1	1.3	208/1	27.8	40	35	35	39	248	SEE BELOW
CU 2	CARRIER	24ACB724	VARIOUS	95	R-410A	24000	2	17	1	11.1	1	0.6	208/1	14.5	20	31	31	35.5	163	SEE BELOW
CU 3	CARRIER	24ACB724	VARIOUS	95	R-410A	30000	2	17	1	11.1	1	0.6	208/1	14.5	20	31	31	35.5	167	SEE BELOW
CU 4	CARRIER	24ACB748	VARIOUS	95	R-410A	48000	2	17	1	21.2	1	1.3	208/1	27.8	40	35	35	39	337	SEE BELOW
CU 5	CARRIER	24ACB724	VARIOUS	95	R-410A	30000	2	17	1	11.1	1	0.6	208/1	14.5	20	31	31	35.5	167	SEE BELOW
CU 6	CARRIER	24ACB748	VARIOUS	95	R-410A	48000	2	17	1	21.2	1	1.3	208/1	27.8	40	35	35	39	337	SEE BELOW
CU 7	CARRIER	24ACB736	VARIOUS	95	R-410A	36000	2	17	1	15.3	1	0.7	208/1	19.8	35	35	35	39	234	SEE BELOW
CU 8	CARRIER	24ACB724	VARIOUS	95	R-410A	24000	2	17	1	11.1	1	0.6	208/1	14.5	20	31	31	35.5	163	SEE BELOW
CU 9	CARRIER	24ACB748	VARIOUS	95	R-410A	48000	2	17	1	21.2	1	1.3	208/1	27.8	40	35	35	39	248	SEE BELOW

NOTES: 1. MOUNT ON EXISTING CONCRETE EQUIPMENT PAD, CASED COIL, BRAZED CONNECTIONS. CONFIRM POWER REQUIREMENTS WITH ELECTRICAL CONTRACTOR.
 2.

ENERGY RECOVERY VENTILATOR SCHEDULE

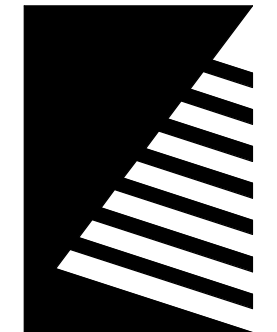
PLAN MARK	MANUFACTURER	MODEL	SERVICE	SUMMER				WINTER				SUPPLY FAN			EXHAUST FAN			DUCT CONNECTION SIZE		ELECTRICAL DATA			PHYSICAL DATA				REMARKS		
				EDB (°F)	EWB (°F)	LDB (°F)	LWB (°F)	EDB (°F)	EWB (°F)	LDB (°F)	LWB (°F)	CFM	ESP (IN. W.C.)	HP	FLA	CFM	ESP (IN. W.C.)	HP	FLA	SA	RA	V/PH	MCA	MOCP	L (IN.)	W (IN.)		H (IN.)	WT. (LB.)
ERV 1	RENEWAIRE	HE1.5XRT	1ST FLOOR	92	76	79.8	67.6	-6	-7	53.3	42	800	0.5	1	6.2	850	0.5	1	6.2	14x16	14x16	208/1	14	15	45.75	32.63	56.75	615	1
ERV 2	RENEWAIRE	HE2XRT	BASEMENT, 1ST FLOOR	92	76	82	68.7	-6	-7	45.5	36.5	1255	0.5	2	6.6	1000	0.5	2	6.6	8x9	31x10	208/1	24.3	35	51	38.13	43.88	784	2

NOTES: 1. ROOF TOP HEAT RECOVERY VENTILATOR. PROVIDE COMPLETE WITH MIN. 14 INCH CURB, ECM MOTORS, NON-FUSED DISCONNECT.
 2. ROOF TOP HEAT RECOVERY VENTILATOR. PROVIDE COMPLETE WITH MIN. 14 INCH CURB, MOTORS WITH VFDS, NON-FUSED DISCONNECT.

AIR DEVICE SCHEDULE

PLAN MARK	MANUFACTURER	MODEL	SERVICE	STYLE	MAX. N.C.	MAX. AIR P.D. (IN. W.C.)	MODULE SIZE	FRAME	FINISH	MATERIAL	REMARKS
S1	TITUS	T3SQ2	1A24	VAV PLAQUE	20	0.1	24X24	LAY-IN	WHITE	STEEL	1,2
S2	TITUS	T3SQ2	1A25	VAV PLAQUE	20	0.1	24X24	LAY-IN	WHITE	STEEL	1,2
S3	TITUS	T3SQ2	1A18	VAV PLAQUE	20	0.1	24X24	LAY-IN	WHITE	STEEL	1
S4	TITUS	T3SQ2	1A06	VAV PLAQUE	20	0.1	24X24	LAY-IN	WHITE	STEEL	1,2
S5	TITUS	T3SQ2	1A04	VAV PLAQUE	20	0.1	24X24	LAY-IN	WHITE	STEEL	1,2

NOTES: 1. DIGITAL VAV DIFFUSER WITH WALL MOUNT THERMOSTAT. COORDINATE 120V POWER LOCATION WITH EC, PROVIDE LOW VOLTAGE TRANSFORMER AND WIRING FOR CONTROLS AS NEEDED.
 2. PROVIDE VAV DIFFUSER WITH RELIEF RING ACCESSORY.



Farnsworth GROUP

100 WALNUT STREET, SUITE 200
 PEORIA, ILLINOIS 61602
 (309) 689-9888 / info@f-w.com

www.f-w.com
 Engineers | Architects | Surveyors | Scientists

ISSUE:
 # DATE: DESCRIPTION:
 1 02/15/2019 ADDENDUM 01

BID SET
 01/23/2019

PROJECT:
 GREATER PEORIA MASS
 TRANSIT DISTRICT

**ADMINISTRATION
 BUILDING HVAC
 RENOVATION**

2105 NE JEFFERSON AVENUE
 PEORIA, ILLINOIS 61603

DATE: 01/23/2019
 DESIGNED: WH/DRR
 DRAWN: WH/DRR
 REVIEWED: DRR

SHEET TITLE:
**MECHANICAL
 SCHEDULES**

SHEET NUMBER:

M6.1

PROJECT NO.: 0180459.03

2/16/2019 12:24:15 PM